

Bladder-type accumulator

Type HAB...-6X/



CE

The data specified within only serve to describe the product. As our products are constantly being further developed, no statements concerning a certain condition or suitability for a certain application can be derived from our information. The information given does not release the user from the obligation of own judgment and verification. It must be remembered that our products are subject to a natural process of wear and aging.

© Bosch Rexroth AG. All rights reserved, also regarding any disposal, exploitation, reproduction, editing, distribution, as well as in the event of applications for industrial property rights.

The cover shows an example configuration. The product supplied may therefore differ from the figure shown.

The original operating instructions were prepared in German.

BG: Използването на този продукт може да се извърши едва тогава, когато разполагате с това упътване за употреба в разбираема за Вас версия на езика и сте разбрали неговото съдържание. Ако това не е така, обърнете се към Вашия партньор Bosch Rexroth или към компетентен сервиз. Ще го намерите в www.boschrexroth.com.

CS: Tento výrobek se smí používat jedině tehdy, máte-li k dispozici tento návod k obsluze v pro vás srozumitelné jazykové verzi a rozumíte-li celému jeho obsahu. Pokud tomu tak není, obraťte se na svou kontaktní osobu u firmy Bosch Rexroth nebo na příslušné servisní středisko. To naleznete také na internetové adrese www.boschrexroth.com.

DA: Dette produkt må ikke anvendes, før du har modtaget og læst driftsvejledningen på et for dig forståeligt sprog og har forstået indholdet. Hvis det ikke er tilfældet, bedes du kontakte din kontaktperson hos Bosch Rexroth eller den ansvarlige kundeserviceafdeling. Den kan du finde på hjemmesiden www.boschrexroth.com.

DE: Die Verwendung dieses Produkts darf erst dann erfolgen, wenn Sie diese Betriebsanleitung in einer für Sie verständlichen Sprachversion vorliegen und den Inhalt verstanden haben. Ist dies nicht der Fall, wenden Sie sich bitte an Ihren Bosch Rexroth Ansprechpartner oder die zuständige Servicestelle. Diese finden Sie auch unter www.boschrexroth.com.

EL: Η χρήση αυτού του προϊόντος επιτρέπεται μόνο, εάν διαθέτετε τις παρούσες οδηγίες χρήσης σε κατανοητή γλώσσα και εφόσον έχετε κατανοήσει το περιεχόμενό τους. Εάν δεν πληρούνται αυτές οι προϋποθέσεις, απευθυνθείτε στους κατά τόπους αντιπροσώπους της Bosch Rexroth ή σε κάποιο εξουσιοδοτημένο σέρβις. Για τα σχετικά στοιχεία επισκεφτείτε την ιστοσελίδα www.boschrexroth.com.

EN: This product may only be used if these operating instructions are available to you in a language version that you can understand and if you have understood its content. If this is not the case, please contact your Bosch Rexroth contact partner or the responsible service point. You can also find them under www.boschrexroth.com.

ES: Este producto únicamente podrá utilizarse cuando disponga de las instrucciones de servicio en un idioma que entienda y haya entendido su contenido. En caso contrario, diríjase a su persona de contacto de Bosch Rexroth o al servicio técnico competente, que podrá encontrar también en la dirección www.boschrexroth.com.

ET: Toodet tohib kasutada ainult siis, kui teil on olemas teie jaoks arusaadavas keeles kasutusjuhend ja te saate selle sisust aru. Kui see nii ei ole, pöörduge oma Bosch Rexrothi esindaja või vastava teeninduse poole. Nende kontaktandmed leiate aadressilt www.boschrexroth.com.

FI: Älä käytä tuotetta ennen kuin olet saanut käyttöohjeen omalla kielelläsi ja ymmärrät sen sisällön. Ota muussa tapauksessa yhteyttä Bosch Rexroth -yhteyshenkilöosi tai valtuutettuun huoltoliikkeeseen. Yhteystiedot löydät osoitteesta www.boschrexroth.com.

FR : Ce produit ne doit être utilisé que lorsque vous disposez des présentes instructions de service en une version linguistique que vous comprenez et que vous avez compris son contenu. Si cela n'est pas le cas, veuillez vous adresser à votre interlocuteur Bosch Rexroth ou au service compétent. Vous trouvez les coordonnées également sur le site www.boschrexroth.com.

HU: A terméket csak akkor szabad használni, ha ez a kezelési útmutató rendelkezésre áll az Ön számára érthető egyik nyelven, és megértette annak tartalmát. Egyéb esetben forduljon a Bosch Rexroth kapcsolattartójához vagy az illetékes szervizhez. Ezeket is megtalálja az alábbi címen: www.boschrexroth.com.

IT: Questo prodotto può essere impiegato solo se si dispone del presente manuale d'uso in una lingua conosciuta e se ne è stato compreso il contenuto. In caso contrario rivolgersi al referente Bosch Rexroth o al punto di assistenza competente. Questi sono anche riportati sul sito www.boschrexroth.com.

LT: Naudoti šį produktą leidžiama tik turint šią vartotojo instrukciją Jums suprantama kalba ir jei supratote jos turinį. Jei instrukcijos nesuprantate, prašome kreiptis į savo Bosch Rexroth konsultantą arba atsakingą aptarnavimo tarnybą. Informaciją apie juos rasite adresu www.boschrexroth.com.

LV: Šo ierīci drīkst lietot tikai tad, ja šī ekspluatācijas instrukcija Jums ir pieejama kādā jums saprotamā valodā un Jūs esat izpratis tās saturu. Pretējā gadījumā lūdzam vērsties pie attiecīgās "Bosch Rexroth" kontaktpersonas vai kompetentā servisa dienestā. Nepieciešamā informācija ir pieejama arī mūsu mājas lapā internetā www.boschrexroth.com.

NL: U mag het product pas gebruiken, als deze bedieningshandleiding voor u beschikbaar is in een voor u begrijpelijke taal en als u de inhoud daarvan begrepen heeft. Is dit niet het geval, neem dan a.u.b. contact op met uw Bosch Rexroth contactpersoon of de servicepartner. Deze vindt u ook op www.boschrexroth.com.

NO: Dette produktet må ikke brukes før du har mottatt denne bruksanvisningen på et språk som du forstår, og du har forstått innholdet. Hvis dette ikke er tilfellet, ta kontakt med din kontaktperson hos Bosch Rexroth eller den ansvarlige kundeserviceavdelingen. Disse finner du også på www.boschrexroth.com.

PL: Przed przystąpieniem do eksploatacji niniejszego produktu należy zapoznać się z instrukcją obsługi w Państwa wersji językowej. W przypadku, gdy nie dołączono instrukcji w danym języku, należy zwrócić się z zapytaniem do osoby kontaktowej Bosch Rexroth lub do odpowiedniego punktu obsługi. Listę takich punktów można znaleźć na stronie www.boschrexroth.com.

PT: Este produto só pode ser utilizado se o manual de instruções estiver disponível em um idioma compreensível para você e se você tiver compreendido o conteúdo do mesmo. Se esse não for o caso, entre em contato com o seu representante da Bosch Rexroth ou com a assistência técnica. Encontre-os em www.boschrexroth.com

RO: Aveți voie să utilizați acest produs, doar după ce ați primit acest manual de utilizare într-o versiune de limbă inteligibilă pentru dumneavoastră și ați înțeles conținutul său. Dacă aceste condiții nu sunt îndeplinite, adresați-vă persoanei dumneavoastră de contact de la Bosch Rexroth sau la service-ul Bosch Rexroth competent. Găsiți aceste service-uri la www.boschrexroth.com

RU: Использование данного продукта разрешается только после получения Вами настоящего руководства по эксплуатации на русском языке и его внимательного изучения. Если у Вас нет руководства по эксплуатации, обратитесь, пожалуйста, к ответственному за Ваш регион представителю Bosch Rexroth или в соответствующий сервисный центр. Оно также находится на сайте www.boschrexroth.com.

SK: Tento výrobok sa smie používať až vtedy, keď ste dostali tento návod na prevádzku k dispozícii v pre vás zrozumiteľnej jazykovej mutácii a obsahu ste porozumeli. V opačnom prípade sa, prosím, obráťte na vašu kontaktnú osobu v Bosch Rexroth alebo na zodpovedné servisné miesto. Nájdete ich tiež na www.boschrexroth.com.

SL: Z uporabo tega izdelka lahko pričnete šele, ko ste prebrali ta navodila za uporabo v vam razumljivem jeziku in razumeli njihovo vsebino. Če navodila za uporabo niso na voljo v vašem jeziku, vas prosimo, da se obrnete na kontaktno osebo podjetja Bosch Rexroth oz. pooblaščen servis. Te lahko najdete tudi na www.boschrexroth.com.

SV: Denna produkt får inte användas förrän du har mottagit en bruksanvisning på ett språk som du förstår och sedan har läst och förstått innehållet i. Om detta inte är fallet ber vi dig kontakta din kontaktperson på Bosch Rexroth eller ansvarig kundservice. Dessa hittar du också på www.boschrexroth.com.

ZH: 使用该产品前, 请您确保已拥有一份您所熟悉语言版本的使用说明书并已理解其内容。如果尚未拥有, 请向博世力士乐合作伙伴或相关服务部门索取, 也可登录 www.boschrexroth.com 下载。

Contents

1	About this documentation	7
1.1	Validity of the documentation	7
1.2	Required and amending documentation	7
1.3	Representation of information	8
1.3.1	Safety instructions	8
1.3.2	Symbols	9
1.3.3	Designations	9
1.3.4	Abbreviations	9
2	Safety instructions	10
2.1	About this chapter	10
2.2	Intended use	10
2.3	Improper use	11
2.4	Qualification of personnel	11
2.5	General safety instructions	12
2.6	Product- and technology-dependent safety instructions	13
2.7	Personal protective equipment	15
2.8	Obligations of the machine end-user	15
3	General information on damage to property and damage to the product	16
4	Scope of delivery	18
5	Product information	19
5.1	Product description	19
5.2	Product identification	20
6	Transport and storage	22
6.1	Transport of the bladder-type accumulator	22
6.1.1	Transport by hand	23
6.1.2	Transport using a forklift	24
6.1.3	Transport using lifting gear	24
6.2	Shipping the bladder-type accumulator	26
6.3	Storage of the bladder-type accumulator	26
7	Assembly	28
7.1	Unpacking	28
7.2	Installation conditions	28
7.3	Required tools	29
7.4	Assembly of the bladder-type accumulator	30
7.4.1	Mounting with clamp(s)	30
7.4.2	Mounting on a console using one/two clamps	32
7.4.3	Attaching a warning sign	34
8	Commissioning	35
8.1	Preparing for commissioning	36
8.2	First commissioning	36
8.3	Re-commissioning after standstill	38
9	Operation	39

10	Maintenance and repair	41
10.1	Cleaning and care	41
10.2	Inspection	41
10.3	Maintenance schedule	42
10.4	Maintenance	42
10.4.1	Required tests/maintenance activities	42
10.4.2	Test intervals of the bladder-type accumulator	43
10.5	Replacing wear parts	44
10.6	Repair	44
11	Disassembly and replacement	45
11.1	Required tools	45
11.2	Preparing for disassembly	45
11.3	Disassembly process	46
12	Disposal	48
12.1	Environmental protection	48
13	Extension and modification	49
14	Troubleshooting	50
14.1	How to proceed when troubleshooting	50
14.2	Fault table	51
15	Technical data	52
16	Appendix	53
16.1	List of addresses	53
17	Alphabetical index	54

1 About this documentation

1.1 Validity of the documentation

This documentation applies to the following products:

- Bladder-type accumulator type HAB...-6X/

This documentation is intended for machine/system manufacturers, assemblers and service engineers.

This documentation contains important information on the safe and proper transport, assembly, commissioning, maintenance, disassembly and simple troubleshooting of the bladder-type accumulator type HAB...-6X/.

- ▶ Read this documentation thoroughly, and in particular chapter 2 "Safety instructions" and chapter 3 "General information on damage to property and damage to the product", before handling the bladder-type accumulator type HAB...-6X/.

1.2 Required and amending documentation



- ▶ The product must not be commissioned until you have been provided with the documentation marked with the book symbol  and you have understood and observed it.

Table 1: Required and amending documentation

Title	Document number	Document type
 Bladder-type accumulator, type HAB, component series 6X Includes technical data, operating conditions, performance limits and project planning information concerning bladder-type accumulators type HAB...-6X/	50171	Data sheet
Charging and test device for hydro-pneumatic accumulators Describes the set-up and use of a charging and test device for hydro-pneumatic accumulators	50144-B	Operating instructions
Hydraulic fluids based on mineral oils and related hydrocarbons Describes the requirements on hydraulic fluids on mineral oil basis and related hydrocarbons for operation with Rexroth hydraulic components and helps you to select a hydraulic fluid for your hydraulic system	90220	Data sheet
Environmentally compatible hydraulic fluids Contains application notes and requirements for Rexroth hydraulic products	90221	Data sheet
Flame-resistant, water-free hydraulic fluids (HFDR/HFDU) Contains application notes and requirements for Rexroth hydraulic products	90222	Data sheet
Flame-resistant hydraulic fluids – containing water (HFAE, HFAS, HFB, HFC) Contains application notes and requirements for Rexroth hydraulic products	90223	Data sheet
General product information on hydraulic products Contains general information on hydraulic products	07008	Operating instructions
Assembly, commissioning and maintenance of hydraulic systems Contains general information on the assembly, commissioning and maintenance of hydraulic systems	07900	Data sheet

The bladder-type accumulator type HAB...-6X/ is a system component.

- ▶ Also observe the instructions for the other system components and the system manufacturer's documentation.

1.3 Representation of information

Uniform safety instructions, symbols, terms and abbreviations are used so that you can quickly and safely work with your product using this documentation. For a better understanding, they are explained in the following sections.

1.3.1 Safety instructions




In this documentation, safety instructions are contained in chapter 2.6 "Product- and technology-dependent safety instructions" and in chapter 3 "General information on damage to property and damage to the product" and wherever a sequence of actions or instructions are explained which bear the danger of personal injury or damage to property. The measures described for hazard avoidance must be observed.

Safety instructions are structured as follows:

 SIGNAL WORD
<p>Type and source of danger</p> <p>Consequences in case of non-compliance</p> <ul style="list-style-type: none"> ▶ Hazard avoidance measures ▶ <Enumeration>

- **Warning sign:** Draws attention to the danger
- **Signal word:** Identifies the degree of danger
- **Type and source of danger:** Specifies the type and source of danger
- **Consequences:** Describes the consequences of non-compliance
- **Precaution:** Specifies how the danger can be prevented


Table 2: Risk classes according to ANSI Z535.6-2006

Warning sign, signal word	Meaning
 DANGER	Indicates a dangerous situation which will cause death or severe injury if not avoided.
 WARNING	Indicates a dangerous situation which may cause death or severe injury if not avoided.
 CAUTION	Indicates a dangerous situation which may cause minor to moderate (personal) injury if not avoided.
NOTICE	Damage to property: The product or the environment could be damaged.

1.3.2 Symbols

The following symbols indicate notes which are not safety-relevant but increase the comprehensibility of the documentation.

Table 3: Meaning of the symbols

Symbol	Meaning
	If this information is not observed, the product cannot be optimally used and/or operated.
▶	Individual, independent action
1.	Numbered instruction: The numbers indicate that the actions must be carried out consecutively.
2.	
3.	

1.3.3 Designations

The following designations are used in this documentation:

Table 4: Designations

Designation	Meaning
P0	Gas filling pressure
PS	Maximum admissible pressure
TS	Admissible min./max. temperature

1.3.4 Abbreviations

The following abbreviations are used in this documentation:

Table 5: Abbreviations

Abbreviation	Meaning
Type HAB...-6X/	Bladder-type accumulator HAB, component series 6X
QR	Quick Response
RE	R exroth document in the E nglish language

2 Safety instructions

2.1 About this chapter

The bladder-type accumulator type HAB...-6X/ has been manufactured according to the generally accepted codes of practice. However, there is still the danger of personal injury and damage to property if you do not observe this chapter and the safety instructions in this documentation.

- ▶ Read this documentation completely and thoroughly before working with the bladder-type accumulator type HAB...-6X/.
- ▶ Keep this documentation in a location where it is accessible to all users at all times.
- ▶ Always include the required documentation when you pass the bladder-type accumulator type HAB...-6X/ on to third parties.

2.2 Intended use

Bladder-type accumulators are hydraulic components intended for the installation into hydraulic drive systems for the purposes of energy storage, shock and vibration absorption, and leakage oil or volume compensation.

Bladder-type accumulators are pressure equipment in the sense of the Pressure Equipment Directive 2014/68/EU.

The bladder-type accumulator type HAB...-6X/ is exclusively intended for integration into a machine or system or to be assembled with other components to form a machine or system.

The bladder-type accumulator may only be commissioned if it has been integrated into the machine/system for which it is intended and after it has been confirmed that the machine/system complies with the provisions of the Machinery Directive, the Pressure Equipment Directive and other provisions valid in your country.

The operating data stated on the name plate, such as the admissible min./max. temperature TS and the maximum admissible pressure PS may not be exceeded. Moreover, the gas filling pressure P0 intended in the hydraulic circuit diagram or operating instructions of the system must be adhered to.

The bladder-type accumulator type HAB...-6X/ is technical equipment and not intended for private use.

Intended use includes having read and understood this documentation, in particular, chapters 2 "Safety instructions" and 3 "General information on damage to property and damage to the product".

2.3 Improper use

Any use deviating from the intended use is improper and thus not admissible. Bosch Rexroth AG does not assume any liability for damage caused by improper use. The user assumes responsibility for all risks surrounding improper use.

Improper use of the bladder-type accumulator type HAB...-6X/ includes:

- Use outside the admissible operating data approved in data sheet 50171, e.g. exceeding the maximum permissible pressure PS specified in the data sheet and noted on the device
- Charging the bladder-type accumulator with a gas other than 99.99 vol.% nitrogen
- Operation of the bladder-type accumulator using group 1 hydraulic fluids (potentially explosive, inflammable, fire-accelerating, toxic) or corrosive fluids
- Performing welding or soldering works at the bladder-type accumulator
- Mechanical processing of the bladder-type accumulator
- Installation or attachment of spare parts not approved by the manufacturer

2.4 Qualification of personnel

The activities described in this documentation require basic knowledge of mechanics and hydraulics as well as knowledge of the appropriate technical terms. For transporting and handling the product, additional knowledge of how to handle lifting gear and the necessary attachment devices is required. In order to ensure safe use, these activities may only be carried out by an expert in the respective field or an instructed person under the direction and supervision of an expert.

Experts are those who can recognize potential dangers and apply the appropriate safety measures due to their professional training, knowledge and experience, as well as their understanding of the relevant conditions pertaining to the work to be undertaken. An expert must observe the relevant specific professional rules and have the necessary hydraulic expert knowledge.

Hydraulic expert knowledge means, among other things:

- reading and completely understanding hydraulic circuit drawings,
- in particular, completely understanding the relationships regarding the safety equipment, and
- having knowledge of the function and set-up of hydraulic components.

The expert has to have successfully completed training for qualified persons for pressure containers and have regularly attended further trainings courses.



Bosch Rexroth offers training measures in specific fields. You can find an overview of the training contents on the Internet at:

www.boschrexroth.com/de/de/academy/.

2.5 General safety instructions

- Observe the valid regulations on accident prevention and environmental protection.
- Observe the safety regulations and provisions of the country in which the product is used/applied.
- Only use Rexroth products in technically perfect condition.
- Observe all notes on the product.
- Persons who assemble, operate, disassemble or maintain Rexroth products must not consume any alcohol, drugs or pharmaceuticals that may affect their ability to react.
- Only use spare parts approved by the manufacturer in order to exclude any hazard to persons due to unsuitable spare parts.
- Comply with the technical data and environmental conditions indicated in the product documentation and on the name plate.
- The installation or use of inappropriate products in safety-relevant applications could result in unintended operating conditions when being used which in turn could cause personal injuries and/or damage to property. Therefore, only use a product for safety-relevant applications if this use is expressly specified and permitted in the documentation of the product, or if the safe suitability of the product in the application is confirmed by a separate conformity assessment procedure for the end product, e.g. in explosion-protected areas or in safety-related parts of control systems (functional safety).
- Do not commission the product until you can be sure that the end product (for example a machine/system) into which the Rexroth products are installed complies with the country-specific provisions, safety regulations and standards of the application.

2.6 Product- and technology-dependent safety instructions

The following safety instructions apply to chapters 6 to 14.

WARNING

Pressurized bladder-type accumulator/pressurized machine/system!

Danger to life, risk of injury, severe injury when working at machines/systems that have not been stopped! Damage to property!

- ▶ Ensure that all relevant components of the hydraulic system are depressurized. Follow the instructions of the machine/system manufacturer.
- ▶ Do not disconnect line connections, connections or components as long as the hydraulic system is pressurized.
- ▶ Secure the machine/system against restarting.

Leakage of (pressurized) hydraulic fluid and oil mist!

Danger to life! Risk of injury! Explosion hazard, risk of fire, health hazard, environmental pollution! Damage to property!

- ▶ Switch the machine/system off immediately (emergency off switch).
- ▶ Identify and remedy the leakage.
- ▶ Never try to stop or seal the leakage or the oil jet using a cloth.
- ▶ Avoid direct contact with the leaking hydraulic fluid.
- ▶ Use your personal protective equipment, e.g. safety goggles.
- ▶ Keep open fire and ignition sources away from the bladder-type accumulator.
- ▶ When dealing with hydraulic fluids, you must be sure to observe the information of the hydraulic fluid manufacturer.

Bursting of the bladder-type accumulator due to welding, soldering or other mechanical work!

Danger to life! Danger of bursting! Damage to property!

- ▶ Do not carry out any mechanical work such as welding or soldering works on the bladder-type accumulator.

Loud hissing when gas is drained!

Danger of hearing damage!

- ▶ Drain the gas slowly.

Uncontrolled release of a significant amount of gas!

Danger to life! Risk of suffocation!

- ▶ Make sure that the workplace is sufficiently ventilated.
- ▶ Always use a suitable charging and test device when checking the gas filling pressure.

 **CAUTION**

Hot/cold surfaces at the bladder-type accumulator!

Risk of burning! Danger of frostbite!

The bladder-type accumulator may considerably heat up/cool down during operation.

- ▶ Only touch the surfaces of the bladder-type accumulator with heat-/cold-resistant protective clothing, e.g. gloves, or do not work at hot/cold surfaces.
- ▶ Allow the bladder-type accumulator to cool down/heat up sufficiently before touching it.
- ▶ Observe the protective measures of the system manufacturer.

Contact with hydraulic fluid!

Health hazard/impairment of health, e.g. eye injuries, skin lesions, poisoning due to inhalation!

- ▶ Avoid contact with hydraulic fluids.
- ▶ When dealing with hydraulic fluids, you must imperatively observe the safety instructions of the hydraulic fluid manufacturer.
- ▶ Use your personal protective equipment, e.g. safety goggles.
- ▶ If, however, hydraulic fluid comes into contact with the eyes, enters the bloodstream or is swallowed, consult a doctor immediately.

Slip hazard due to oily surfaces!

Risk of injury!

- ▶ Protect and mark the danger zone.
- ▶ Immediately remove leaked hydraulic fluid.
- ▶ Use an oil binding agent in order to bind the leaked hydraulic fluid.
- ▶ Remove and dispose of the contaminated oil binding agent, see chapter 12 "Disposal".
- ▶ Wear the protective equipment, e.g. safety shoes, prescribed for your activity.

2.7 Personal protective equipment

During operation and maintenance work as well as during installation and removal of the bladder-type accumulator, always wear the following personal protective equipment:

- Heat- or cold-resistant protective gloves
- Ear protection
- Safety shoes
- Perfectly fitting safety goggles
- Protective helmet

2.8 Obligations of the machine end-user

The bladder-type accumulator is primed when supplied ex plant. The machine end-user is responsible for assuring a sufficient corrosion protection corresponding to the environmental conditions and requirements.

In order to ensure safety when handling the bladder-type accumulator and its components, the machine end-user of the system must:

- guarantee the intended use of the bladder-type accumulator and its components according to chapter 2.2 "Intended use".
- instruct the operating personnel regularly in all items of the operating instructions and make sure that they are observed.
- ensure compliance with the instructions on occupational safety and with the operating instructions.
- ensure adherence to the operating data stated on the name plate, such as the admissible min./max. temperature TS and the maximum admissible pressure PS, as well as adherence to the gas filling pressure P0 intended in the hydraulic circuit diagram or operating instructions of the system.

The operation of installations, systems and machines fundamentally requires the implementation of a holistic IT security concept which is state-of-the-art in terms of technology. Accordingly, Rexroth products and their properties have to be considered as components of installations, systems and machines for their holistic IT security concept.

Unless otherwise documented, Rexroth products are designed for operation in local, physically and logically secured networks with access restricted to authorized persons, and which are not classified according to IEC 62443-4-2.

3 General information on damage to property and damage to the product

The following information applies to chapters 6 to 14:

NOTICE

Danger due to improper handling!

Damage to property!

- ▶ Do not expose the bladder-type accumulator to any inadmissible mechanical load.
- ▶ Do not place any objects on top of the bladder-type accumulator.
- ▶ Never use the bladder-type accumulator as a handle or step.
- ▶ Do not apply further loads/forces.
- ▶ Leave the protective covers (e.g. cover cap of gas valve, protective cap of oil valve) at the bladder-type accumulator until shortly before connection of the lines.

Contamination of the hydraulic fluid!

Early wear and malfunctions!

- ▶ It is imperative that the working environment at the site of installation is free of dust and foreign substances in order to prevent foreign particles (e.g. welding beads or metal chips) from getting into the hydraulic lines and causing wear or malfunctions of the bladder-type accumulator. The bladder-type accumulator must be protected from dirt during installation.
- ▶ Make sure that all connections, hydraulic lines and attachment parts (e.g. measuring devices) are clean and free of chips.
- ▶ For removing lubricants or any other contamination, use industrial residue-free wipes.
- ▶ No contamination must enter when closing the connections.
- ▶ Before commissioning, ensure that all hydraulic connections are tight and that all seals and caps of the plug-in connections are correctly installed and undamaged in order to prevent fluids and foreign particles from penetrating the bladder-type accumulator.

Environmental pollution caused by incorrect disposal!

Environmental pollution! Damage to property!

- ▶ Dispose of the bladder-type accumulator, the hydraulic fluid and the packaging in accordance with the applicable national regulations in your country.
- ▶ Dispose of the hydraulic fluid in accordance with the valid safety data sheet for the hydraulic fluid.

NOTICE

Leaking or spilled hydraulic fluid!

Environmental pollution and contamination of the ground water!

- ▶ Immediately remedy possible leakage.
- ▶ If hydraulic fluid is spilled, use an oil binding agent.
- ▶ Observe the information in the safety data sheet for the hydraulic fluid and the system manufacturer's provisions.



The warranty only applies to the delivered configuration. The claim to warranty expires if the product is assembled, commissioned and operated incorrectly, not used as intended and/or handled improperly.

4 Scope of delivery

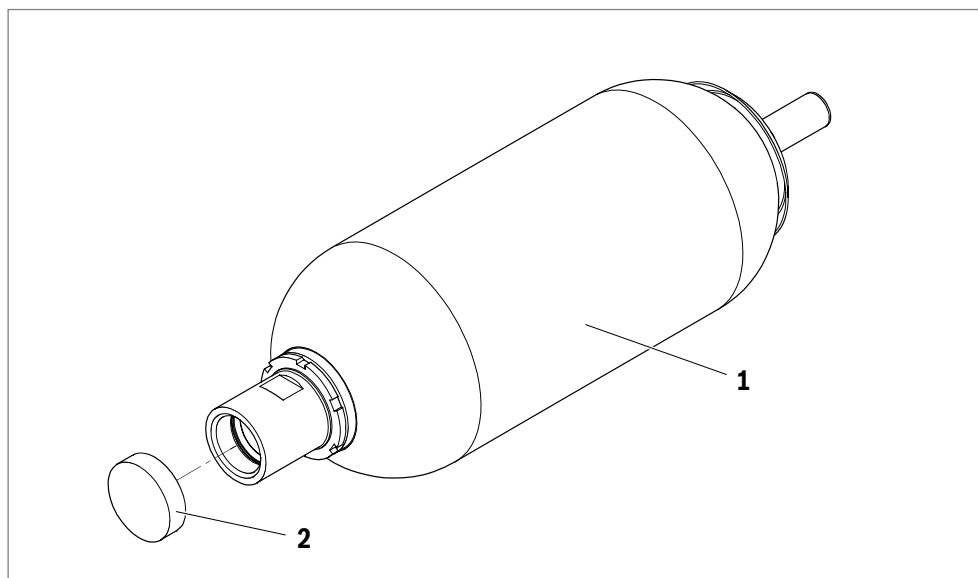


Fig. 1: Scope of delivery of the bladder-type accumulator type HAB...-6X/

- 1** Bladder-type accumulator **2** Protective cap at oil valve

The scope of delivery includes:

- 1 bladder-type accumulator type HAB...-6X/ (1)
- 1 set of operating instructions in German and English
- 1 declaration of conformity (only for bladder-type accumulators with a capacity above 1l)

Upon delivery, the following parts are also mounted:

- Protective cap on the oil valve (2)

The bladder-type accumulator is primed when supplied.

5 Product information

5.1 Product description

Bladder-type accumulators are intended for the use in hydraulic systems.

They are used for energy storage, shock and vibration absorption, and leakage oil compensation or volume compensation.

The high compressibility of gases is used for the bladder-type accumulator.

Bladder-type accumulators of type HAB...-6X/ basically comprise the following components:

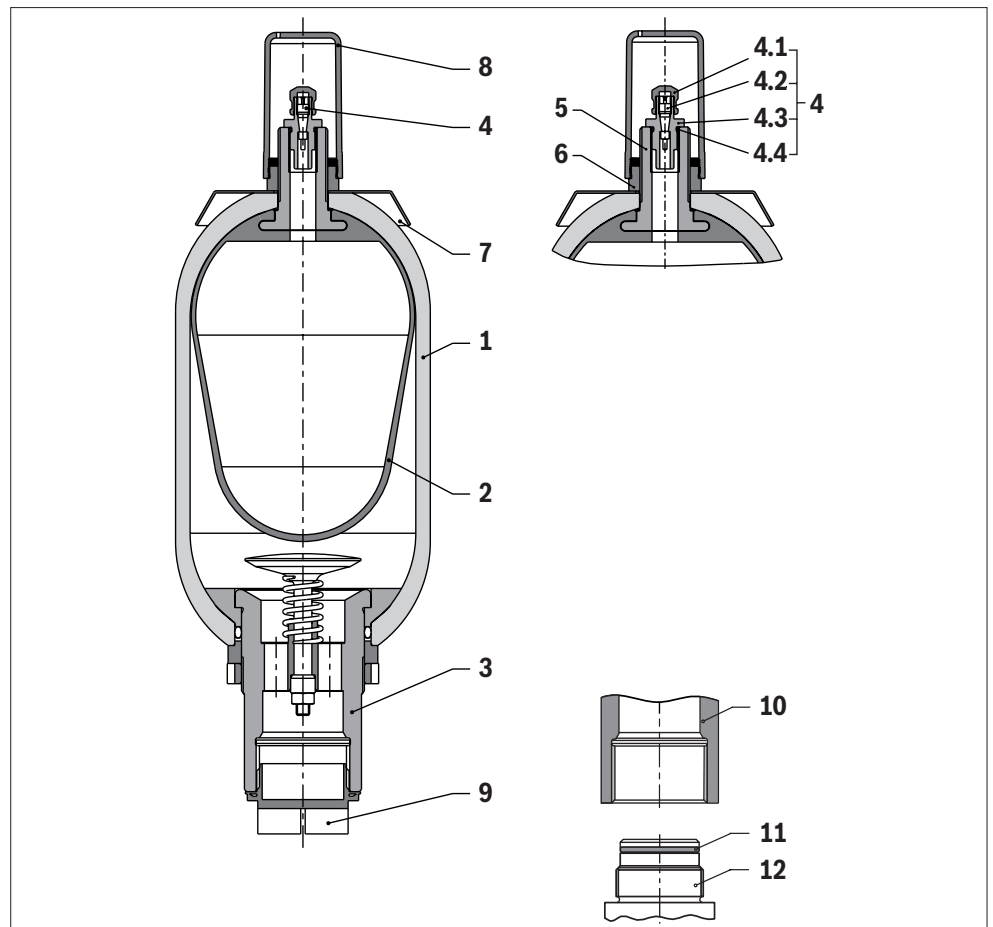


Fig. 2: Set-up of the bladder-type accumulator and the gas valve

- | | |
|---|---|
| 1 Pressure container | 6 Holding nut |
| 2 Bladder | 7 Name plate |
| 3 Oil valve | 8 Cover cap of gas valve |
| 4 1. Gas valve with sealing cap | 9 Protective cap of oil valve |
| 2. Gas valve insert | 10 Sealing surface on the hydraulic fluid connection |
| 3. Gas valve body | 11 O-ring on accumulator adapter |
| 4. O-ring | 12 Example of accumulator adapter |
| 5 Gas valve support | |

Bladder-type accumulators consist of a seamless cylindrical pressure container **(1)** made of high-strength steel.

An elastic bladder **(2)** mounted inside the container separates the interior of the accumulator into a gas side and a fluid side.

Via the gas valve **(4)**, the bladder is filled with nitrogen up to the intended gas filling pressure P_0 . It consists of sealing cap **(4.1)**, gas valve insert **(4.2)**, gas valve body **(4.3)**, O-ring **(4.4)** and gas valve support **(5)**. The gas valve support is inseparably integrated into the gas bladder.

When the operating pressure is increased, fluid is flowing into the bladder-type accumulator and compresses the gas in the bladder until the gas pressure is identical to the fluid pressure. When the operating pressure is reduced, the gas expands again and feeds the hydraulic system with fluid.

The oil valve **(3)** is located in the hydraulic fluid connection of the bladder-type accumulator and is open in an operating state. There is a protective cap **(9)** over the hydraulic fluid connection to protect the oil valve during transportation.

If the bladder-type accumulator is drained completely, the expanding bladder pushes the valve into the closed position. This prevents the bladder from entering the oil channel and being destroyed.

The name plate **(7)** includes the technical data and features of the bladder-type accumulator.

Using the holding nut **(6)**, the bladder and name plate are fixed. In order to protect the gas valve during transport, a cover cap **(8)** is provided on the gas port.



More detailed information on the operating conditions, connection dimensions and performance limits of the bladder-type accumulator is provided in data sheet 50171, see chapter 1.2 "Required and amending documentation".

5.2 Product identification

The bladder-type accumulator can be identified by its name plate.



The operation of the bladder-type accumulator is only admissible, when the name plate is present and fully legible.

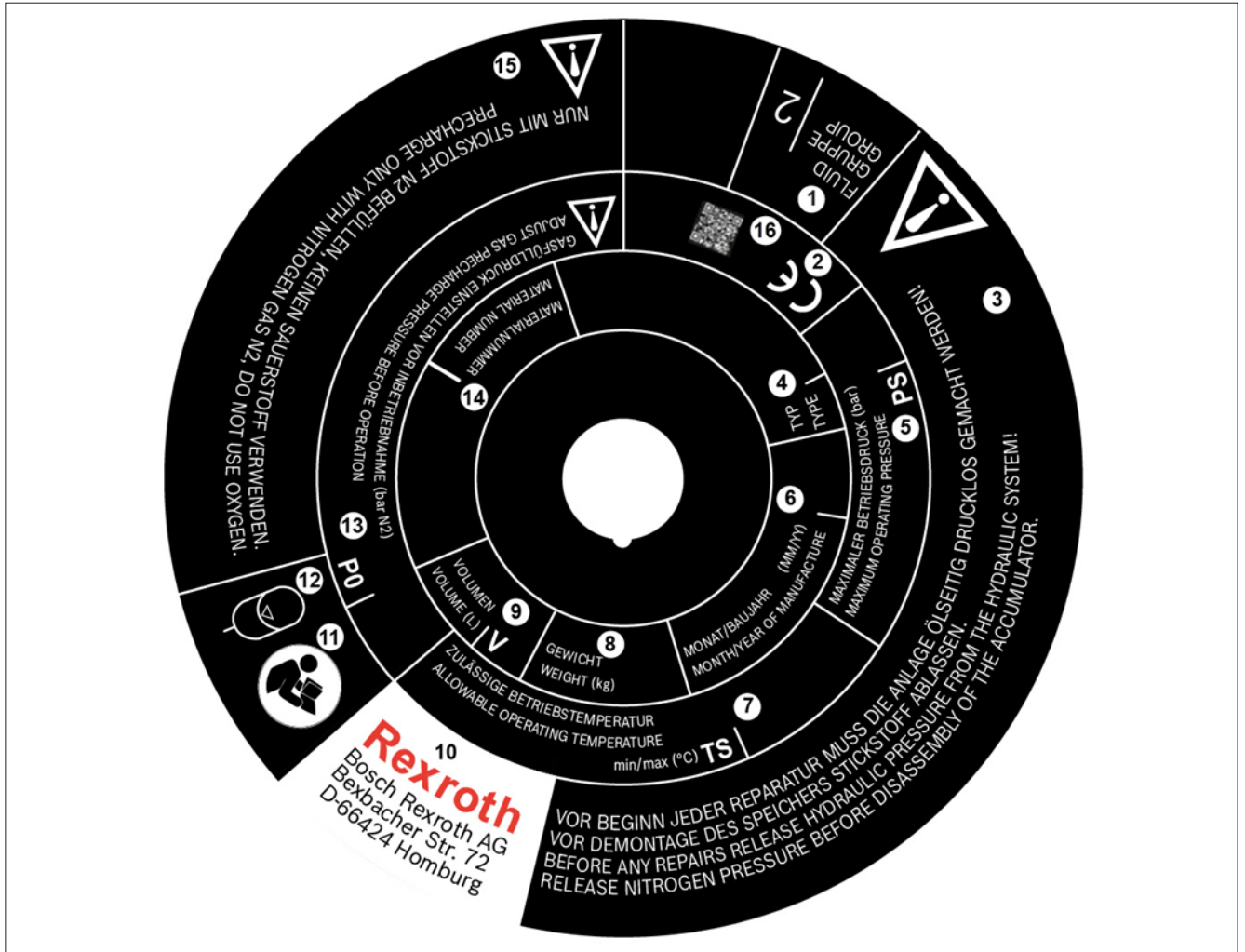


Fig. 3: Example of the name plate of a bladder-type accumulator

- | | |
|--|---|
| 1 Fluid group | 8 Weight |
| 2 CE mark (not required for storage tanks with a volume of 1 l) | 9 Volume |
| 3 Warning 1 | 10 Company address |
| 4 Type | 11 Information in operating instructions |
| 5 Maximum admissible pressure PS | 12 Symbol for bladder-type accumulator |
| 6 Date of production (month/year) | 13 Gas filling pressure P0 |
| 7 Admissible min./max. temperature TS | 14 Material number |
| | 15 Warning 2 |
| | 16 QR code |

6 Transport and storage

- ▶ Always comply with the required environmental conditions with regards to transport and storage, see chapter 6.3 "Storage of the bladder-type accumulator".



For notes on unpacking, refer to chapter 7.1 "Unpacking".

6.1 Transport of the bladder-type accumulator

WARNING

Falling of the bladder-type accumulator due to improper transport!

Risk of injury! Danger of crushing! Danger of bone fractures! Damage to property!

- ▶ Use lifting gear with sufficient lifting capacity to lift bladder-type accumulators with a weight > 15 kg.
- ▶ Use lifting straps or lifting slings as attachment devices.
- ▶ Never step or reach below suspended loads.
- ▶ Provide for a stable center of gravity position during transport.
- ▶ Use your personal protective equipment, e.g. safety shoes.
- ▶ Place the bladder-type accumulator carefully onto the contact surface to prevent damage.

Uncontrolled rolling away, overturning or falling of the bladder-type accumulator!

Risk of injury! Damage to property!

- ▶ Make sure that the bladder-type accumulator is positioned safely and secured against unintended rolling away, overturning or falling.

NOTICE

Impact or similar forces during transport!

Risk of damage! Damage to property! Risk of corrosion!

- ▶ For further transport, package the bladder-type accumulator in stable packaging, e.g. a wooden crate and/or strap it securely to a pallet.
- ▶ Ensure that the packaging offers sufficient protection to the gas valve.
- ▶ In the case of sea freight, protect the bladder-type accumulator against salty air with plastic film, for example.
- ▶ Allow the bladder-type accumulator to come up to the ambient temperature before packaging.

- Close openings** ▶ Before transport, close all openings using the supplied protective caps/cover caps in order to protect the bladder-type accumulator from penetration by dirt or humidity, and from oil residues within the bladder-type accumulator due to oil-wetted surfaces.

- Transport** There are the following transport possibilities depending on weight and transport duration:
- Transport by hand
 - Transport using a forklift
 - Transport using lifting gear (e.g. lifting straps, lifting sling)

Weight **Table 6: Weights**

Nominal volume [l]	1	2.5	4	6	10	20	24	32	50
Weight [kg]	7	10	16.5	20	32	53	61	85	123



The weight indicated only refers to the bladder-type accumulator; the weight of any attachments is not taken into account. Information on the weight of the bladder accumulator can be found on the name plate of the bladder-type accumulator and in data sheet 50171, see chapter 1.2 "Required and amending documentation".

6.1.1 Transport by hand

- CAUTION!** Risk of injury due to heavy loads (weight > 15 kg)!
 When carrying bladder-type accumulators, there is a danger of health hazards.
- ▶ Use a suitable lifting, putting down and moving technique.
 - ▶ Use your personal protective equipment, e.g. safety shoes.



Bladder-type accumulators with a weight of up to 15 kg can be transported by hand for a short time, if necessary.

6.1.2 Transport using a forklift

WARNING! Falling of the bladder-type accumulator during transport!

Risk of injury! Damage to property!

- ▶ Only transport the bladder-type accumulator using a forklift if it is securely strapped to a pallet or in stable packaging and secured against rolling away.

To transport the bladder-type accumulator using a forklift proceed as follows:

- ▶ Move the fork of the forklift under the pallet/package of the bladder-type accumulator.
- ▶ Only lift the bladder-type accumulator as far off the floor as necessary for transport.

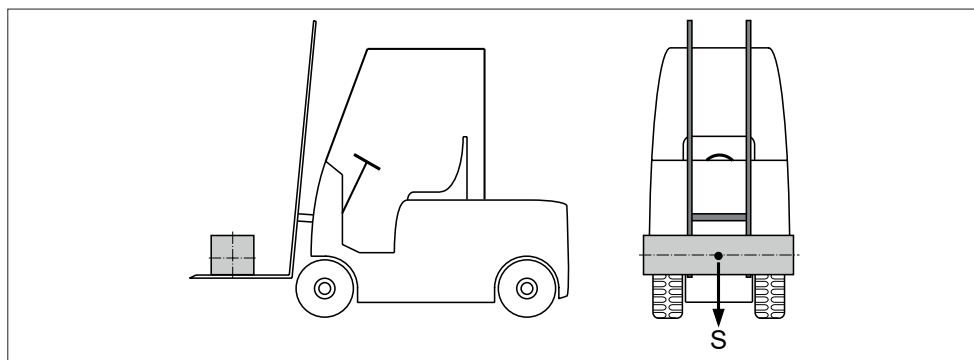


Fig. 4: Transport using a forklift

6.1.3 Transport using lifting gear

For the transport, the bladder-type accumulator can be connected to lifting gear.

- ▶ Always use a lifting strap/lifting sling to lift the bladder-type accumulator.

Transport in horizontal position

- ▶ To transport the bladder-type accumulator in horizontal position using lifting gear proceed as follows:

WARNING! During transport using a lifting strap/lifting sling, the bladder-type accumulator may tilt out of the loop!

Risk of injury! Damage to property!

- ▶ Use lifting slings, lifting straps and lifting gear with sufficient lifting capacity.
- ▶ Make sure that the bladder-type accumulator is safely fixed using the lifting strap/lifting sling.
- ▶ Guide the bladder-type accumulator by hand for fine positioning.

- 1.** Fasten the lifting strap/lifting sling/lifting gear by making loops in the area of the basic body of the accumulator.
- 2.** Carefully lift the bladder-type accumulator to check the center of gravity position. Ensure a stable center of gravity position.
- 3.** Make sure that the bladder-type accumulator cannot move out of the intended position and the lifting straps/lifting slings do not move during lifting.
- 4.** Only lift the bladder-type accumulator as far off the floor as necessary for transport.

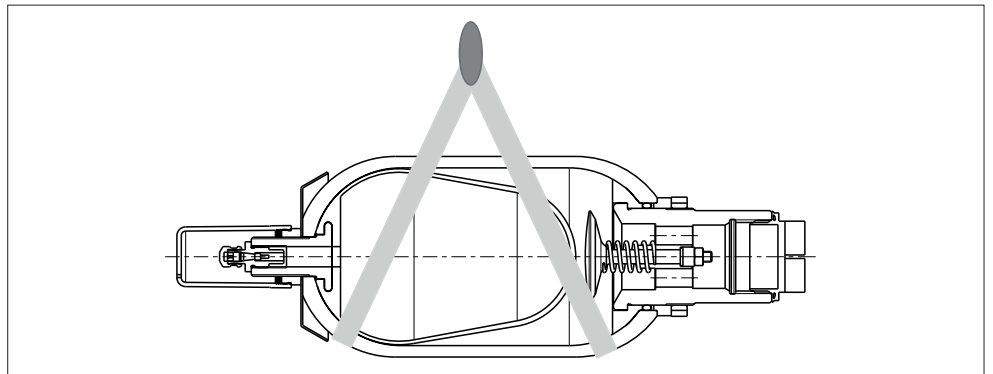


Fig. 5: Transport using lifting gear in horizontal position

Transport in vertical position

To transport the bladder-type accumulator in vertical position using lifting gear proceed as follows:

- 1.** Screw a lifting device onto the thread 7/8" 14 UNF-1A, see item 2 in Fig. 6. To do this, take off the gas valve cover cap, see item 1 in Fig. 6.



Bosch Rexroth offers lifting device HE0272, material number: R913066081.

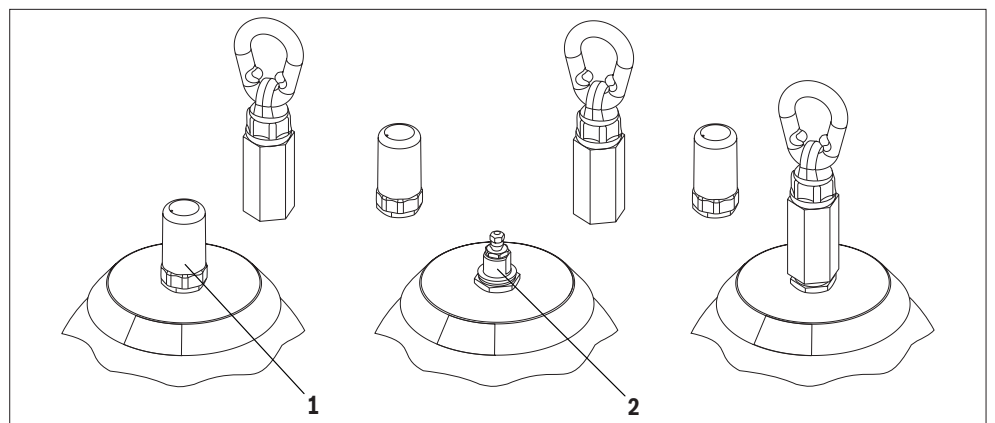


Fig. 6: Connecting a lifting device

1 Cover cap of gas valve

2 Thread 7/8" 14 UNF-1A

2. Attach the lifting gear to the lifting device.

WARNING! Falling of the bladder-type accumulator due to uncontrolled loosening of the lifting device/lifting gear!

Risk of injury! Damage to property!

- ▶ Use a lifting device and lifting gear with sufficient lifting capacity.
- ▶ Ensure that the bladder-type accumulator is securely fixed at the lifting device and the lifting gear.

NOTICE! Damage to the gas valve support and the bladder due to vibrations of the bladder-type accumulator during transport!

Damage to property!

- ▶ Move the bladder-type accumulator slowly and evenly in the intended position.
- ▶ Guide the bladder-type accumulator by hand for fine positioning.

3. Lift the bladder-type accumulator carefully using the lifting gear, and move it slowly to the intended position.

6.2 Shipping the bladder-type accumulator

If the bladder-type accumulator is shipped with a gas filling pressure of 2 bar and more, it must be declared as UN number 3164 (Article under pneumatic pressure containing non-flammable gas). Depending on the type of dispatch, the relevant directives must be observed.

Bladder-type accumulators are only shipped ex works by air freight in a depressurized state. Gas filling pressures specified by type code are also released at the factory. The pressure release is demonstrated on a certificate enclosed with the accumulator.

6.3 Storage of the bladder-type accumulator

The bladder-type accumulator is primed when supplied. The machine end-user must ensure sufficient corrosion protection during storage.

- Requirements**
- ▶ Ensure that the storage rooms are dry and free of corrosive substances and gases.
 - ▶ Ensure a constant temperature, if possible. Optimum storage temperature: +5 °C to +30 °C
 - ▶ Make sure the bladder-type accumulator cannot roll away.
 - ▶ Ensure that the cover cap at the gas valve and the protective cap at the oil valve are attached.

Maximum storage time The maximum storage time of the bladder-type accumulator amounts to 5 years.

Commissioning after storage

Procedure after expiration of maximum storage time:

- ▶ Carry out a visual inspection of the bladder-type accumulator and check for any damage and corrosion.
- ▶ After the expiration of the maximum storage time, have the complete bladder-type accumulator checked by an expert, see chapter 2.4 "Qualification of personnel".
- ▶ After the expiration of the maximum storage time, have the bladder, seals and gas valve insert exchanged by an expert, see chapter 2.4 "Qualification of personnel".



Please note that the warranty period is not prolonged by the storage time. The claim to warranty expires in case of non-compliance with the requirements and the storage conditions or after expiry of the maximum storage time.



Please note that, according to the provisions and ordinances valid in your country, the test intervals mostly refer to the date of manufacture and are also not prolonged by the storage time.

7 Assembly

Prior to assembly, make sure the following documents are to hand:

- Hydraulic circuit diagram and an assembly drawing for the machine/system (can be obtained from the machine/system manufacturer)
- Data sheet 50171 of the bladder-type accumulator (contains the admissible technical data), see chapter 1.2 "Required and amending documentation"

7.1 Unpacking

CAUTION! Danger due to falling parts or rolling of the bladder-type accumulator!
Risk of injury! Damage to property!

- ▶ Put the pallet/packaging on level, bearing ground.
- ▶ Only open the packaging from the top.
- ▶ Before opening the packaging and/or loosening the tension belts, make sure that the bladder-type accumulator cannot roll away.
- ▶ Open the packaging of the bladder-type accumulator or loosen the tension belts.
- ▶ Remove the bladder-type accumulator manually or using lifting gear – depending on its weight.
- ▶ Check the bladder-type accumulator for transport damage and completeness, see chapter 4 "Scope of delivery".
- ▶ Dispose of the packaging in accordance with the currently applicable national provisions in your country.

7.2 Installation conditions

- Fastening**
- ▶ Fasten the bladder-type accumulator so that any forces, such as the ones created by vibrations or acceleration specific to that application, are absorbed safely.
 - ▶ When using several mounting points, avoid stress caused by operational, elastic deformations or temperature expansions.



Bosch Rexroth offers suitable holding devices in the form of mounting clamps and consoles as accessories.

For further information on the accessories, refer to data sheet 50171, see chapter 1.2 "Required and amending documentation".

Installation position The bladder-type accumulator should preferably be installed vertically. A clearance area of 200 mm must be provided above the gas valve for the charging and test device.



Bosch Rexroth offers the filling and test device for bladder-type accumulators (HAB), material number: 0538103011 as well as the charging and test device for bladder-type and membrane storage (HAB/HAD), material number: 0538103014. For further information on the accessories, refer to data sheet 50171, see chapter 1.2 "Required and amending documentation".

Fuse protection The bladder-type accumulator must be protected against operation outside the admissible limits in accordance with the Pressure Equipment Directive 2014/68/EU.

Cleanliness It is imperative to ensure absolute cleanliness. The bladder-type accumulator and all other parts used must be installed free from dirt. Contamination of the hydraulic fluid may considerably reduce the life cycle of the bladder-type accumulator.

Temperature The temperature of the bladder-type accumulator must correspond to the ambient temperature of the site of installation. Allow the bladder-type accumulator to acclimatize sufficiently in order to adapt to the temperature conditions.

7.3 Required tools

For the assembly of the bladder-type accumulator you will need:

- Charging and test device for bladder-type accumulators (HAB), material number: 0538103011 or for bladder and diaphragm accumulators (HAB/HAD), material number: 0538103014, according to data sheet 50171/operating instructions 50144-B, see chapter 1.2 "Required and amending documentation".
- Open-end wrench
- Lifting gear

Table 7: Required wrench sizes of the open-end wrench

Bladder-type accumulator: Volume in liters	Open-end wrench: Wrench size
1-6	50 mm
10-50	70 mm

7.4 Assembly of the bladder-type accumulator

NOTICE

Leakage at the bladder-type accumulator!

Damage to property!

- ▶ Before the assembly, check that the seal, see Fig. 2, item 11, and the sealing surface of the bladder-type accumulator, see Fig. 2, item 10 are intact.
- ▶ Assembly of the bladder-type accumulator should only be carried out by qualified personnel, see chapter 2.4 "Qualification of personnel".

To assess the necessity and design of suitable holding devices, the application and installation conditions must be examined more closely.



Bosch Rexroth offers suitable holding devices in the form of mounting clamps and consoles as accessories, and recommends that these are integrated for static applications.

For further information on the accessories, refer to data sheet 50171, see chapter 1.2 "Required and amending documentation".

7.4.1 Mounting with clamp(s)

The bladder-type accumulator may be attached using one or two clamps:

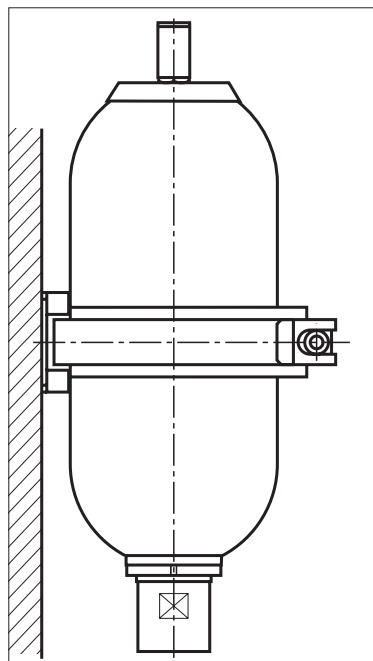
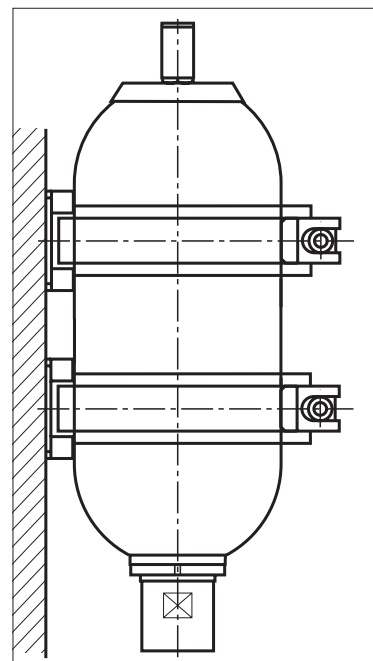


Fig. 7: Mounting with one clamp



Mounting with two clamps

To install the bladder-type accumulator using one or two clamps proceed as follows:

CAUTION! Residual oil escapes when the protective cap is removed from the hydraulic fluid connection!

Slip hazard! Health hazard! Environmental pollution!

- ▶ Remove leaking residual oil immediately.
- ▶ Use your personal protective equipment, e.g. safety goggles.
- ▶ If, however, hydraulic fluid comes into contact with the eyes, enters the bloodstream or is swallowed, consult a doctor immediately.

- ▶ Remove the protective cap from the hydraulic fluid connection of the bladder-type accumulator.
- ▶ Ensure that the hydraulic fluid connection of the bladder-type accumulator and the hydraulic system are clean and free of foreign particles.
- ▶ Check that the seal and sealing surface of the hydraulic fluid connection and the connection thread are intact.

WARNING! Falling of the bladder-type accumulator during assembly

Danger to life! Risk of injury! Damage to property!

- ▶ Use lifting gear with sufficient lifting capacity to lift bladder-type accumulators with a weight > 15 kg.
- ▶ Use lifting straps or lifting slings as attachment devices.

- ▶ The bladder-type accumulator is to be attached to suitable lifting gear in such a way that safe support is guaranteed.
- ▶ Move the bladder-type accumulator to the intended position using suitable lifting gear.
- ▶ Place the bladder-type accumulator on the hydraulic fluid connection.
 - The bladder-type accumulator has to be securely held in a vertical position by the lifting device.

- ▶ Screw the bladder-type accumulator into the thread of the hydraulic fluid connection by hand.
 - Make sure that the thread interlocks after one rotation at the latest.
 - If need be, lower the bladder-type accumulator and manually screw it into the thread until the stop of the thread is reached. The end face of the port must fit completely to its counterpart.
- ▶ Lower the lifting device further and make sure that the bladder-type accumulator is firmly seated on the hydraulic fluid connection.
- ▶ Check the vertical mounting position of the bladder-type accumulator.
- ▶ Use an open-end wrench to firmly tighten the bladder-type accumulator onto the hydraulic fluid connection.

For threaded bladder-type accumulators:

**For bladder-type
accumulators with
SAE flange:**



The SAE flange halves required for fastening, the corresponding screw set and the O-ring are not part of the Bosch Rexroth scope of delivery.
For installation information, refer to the manufacturer's instructions.

- ▶ Install the mounting clamp(s) at the provided point(s).
- ▶ Align the mounting clamp(s) at the bladder-type accumulator so that an installation without tension stress is guaranteed.
- ▶ Remove the lifting device.

The bladder-type accumulator is now mounted.

7.4.2 Mounting on a console using one/two clamps

The bladder-type accumulator can also be attached to a console:

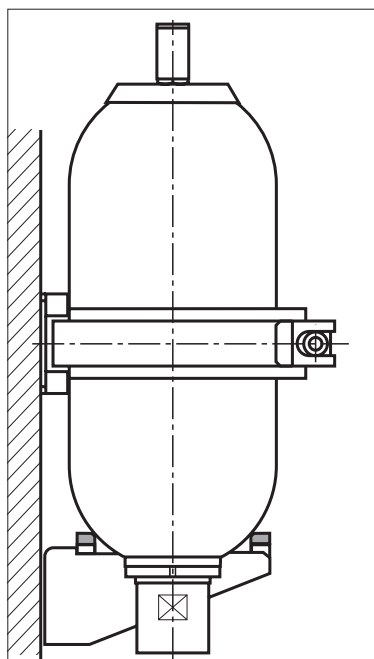


Fig. 8: Mounting on a console

To install the bladder-type accumulator on a console using one/two clamps proceed as follows:

- ▶ Install the console at the designated position.
- ▶ Install the mounting clamp(s) at the designated position.

WARNING! Falling of the bladder-type accumulator during assembly
Danger to life! Risk of injury! Damage to property!

- ▶ Use lifting gear with sufficient lifting capacity to lift bladder-type accumulators with a weight > 15 kg.
- ▶ Use lifting straps or lifting slings as attachment devices.

- ▶ The bladder-type accumulator is to be attached to suitable lifting gear in such a way that safe support is guaranteed.
- ▶ Move the bladder-type accumulator to the intended position using suitable lifting gear.
- ▶ Set the bladder-type accumulator down on the console.
 - The bladder-type accumulator has to be securely held in a vertical position by the lifting device.
- ▶ Check the vertical mounting position of the bladder-type accumulator.
- ▶ Install the mounting clamp(s) at the designated position.
- ▶ Remove the lifting device.

CAUTION! Residual oil escapes when the protective cap is removed from the hydraulic fluid connection!

Slip hazard! Health hazard! Environmental pollution!

- ▶ Remove leaking residual oil immediately.
- ▶ Use your personal protective equipment, e.g. safety goggles.
- ▶ If, however, hydraulic fluid comes into contact with the eyes, enters the bloodstream or is swallowed, consult a doctor immediately.

- ▶ Remove the protective cap from the hydraulic fluid connection of the bladder-type accumulator.
- ▶ Connect the hydraulic lines to the hydraulic fluid connection of the bladder-type accumulator.
 - Assemble the hydraulic lines on the bladder-type accumulator without tension stress. The screw connections should move smoothly.

For threaded bladder-type accumulators:

- ▶ Use an open-end wrench to hold the oil valve in place.
- ▶ Use an open-end wrench to firmly tighten the bladder-type accumulator onto the hydraulic fluid connection.

For bladder-type accumulators with SAE flange:



The SAE flange halves required for fastening, the corresponding screw set and the O-ring are not part of the Bosch Rexroth scope of delivery. For installation information, refer to the manufacturer's instructions.

The bladder-type accumulator is now mounted.

7.4.3 Attaching a warning sign

- ▶ After installation, affix a warning sign with the symbol of a bladder-type accumulator in a visible and accessible place.

Bosch Rexroth offers the following warning signs (stickers) for bladder-type accumulators:

Accumulator volume in liters:	1-2.5	4-50
Size:	100 mm x 45 mm	200 mm x 90 mm
Material number:	R901476664	R901440344

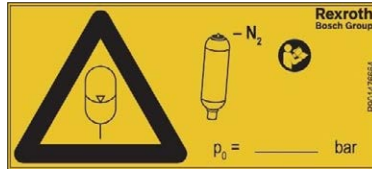


Fig. 9: Example of warning sign

- ▶ Enter the set gas filling pressure P0 on the warning sign.

8 Commissioning

WARNING

Reduction of wall thickness of the pressure container when operated using corrosive hydraulic fluids! Load of the pressure container and the elastic elements (sealing devices) during operation with abrasive hydraulic fluids!

Danger to life! Danger of bursting! Damage to property!

- ▶ Only use the hydraulic fluids recommended in data sheet 50171, see chapter 1.2 "Required and amending documentation".

Bursting of the bladder-type accumulator due to the maximum admissible pressure PS being exceeded!

Danger to life! Risk of injury! Damage to property!

- ▶ Adhere to the maximum admissible pressure PS indicated on the name plate.

CAUTION

Leakage of hydraulic fluid under high pressure due to faulty assembly of the bladder-type accumulator!

Risk of injury! Damage to property!

- ▶ Ensure that the bladder-type accumulator has been mounted by an expert, see chapter 2.4 "Qualification of personnel", completely and without tension stress before commissioning the bladder-type accumulator.
- ▶ Ensure that the tightening torques required by the system have been observed.

NOTICE

Wear or cracks in the bladder due to the gas filling pressure being too low or too high! Sudden gas losses into the system!

Damage to property!

- ▶ Adhere to the gas filling pressure indicated on the hydraulic circuit diagram.



For commissioning of the bladder-type accumulator, always observe the operating instructions of the overall system.

For commissioning the bladder-type accumulator, use the charging and test device for bladder-type accumulators (HAB), material number: 0538103011 or for bladder and diaphragm accumulators (HAB/HAD), material number: 0538103014, according to data sheet 50171 and operating instructions 50144-B, see chapter 1.2 "Required and amending documentation".

8.1 Preparing for commissioning



The examination of the bladder-type accumulator prior to commissioning as well as the recurring tests are to be performed according to national rules.

- ▶ Make sure that the bladder-type accumulator is intact.
- ▶ Ensure based on the information on the name plate that the bladder-type accumulator corresponds to the specifications provided in the hydraulic circuit diagram or in the system parts list.
- ▶ Cover the bladder-type accumulator with a final coating, if required for corrosion protection due to environmental conditions. The product is only supplied primed.
- ▶ Verify that the hydraulic fluid used in the hydraulic system conforms to the specifications on the bladder-type accumulator name plate and data sheet 50171.
- ▶ Make sure that the maximum admissible pressure PS of the bladder-type accumulator is equal to or greater than the maximum operating pressure of the hydraulic circuit.
- ▶ Check that the operating temperatures are within the limits specified on the name plate.
- ▶ Make sure that the bladder-type accumulator has been installed completely and without tension stress.
- ▶ Have ready the charging and test device for bladder-type accumulator (HAB), material number: 0538103011 or for bladder-type and diaphragm accumulators (HAB/HAD), material number: 0538103014, and its operating instructions 50144-B, see chapter 1.2 "Required and amending documentation".

8.2 First commissioning

- ▶ Set the bladder-type accumulator to the specified gas filling pressure according to the hydraulic circuit diagram prior to any commissioning.

Set gas filling pressure

Proceed as follows to set the gas filling pressure:

- ▶ Make sure that the system is depressurized.
- ▶ Remove the cover cap and the sealing cap from the gas side of the bladder-type accumulator.

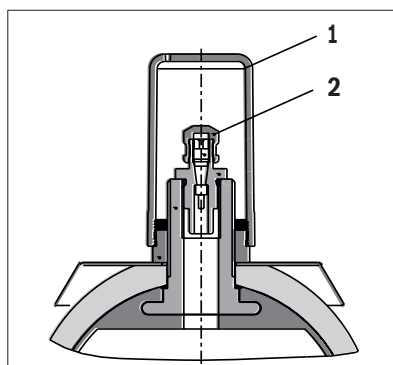


Fig. 10: Removing the cover cap and sealing cap

1 Cover cap

2 Sealing cap

- ▶ Screw the charging and test valve of the charging and test device, material number: 0538103011 or 0538103014, onto the gas valve of the bladder-type accumulator.



Additionally, please observe the operating instructions 50144-B, see chapter 1.2 "Required and amending documentation".

WARNING! Explosion of the bladder-type accumulator when charged with unapproved gas, e.g. oxygen!

Danger to life! Risk of injury!

- ▶ Only charge the bladder-type accumulator with nitrogen 99.99 vol.%.

WARNING! Uncontrolled release of a significant amount of gas!

Danger to life! Risk of suffocation!

- ▶ Make sure that the workplace is sufficiently ventilated.
- ▶ For checking the gas filling pressure, always use suitable charging and test device, material number: 0538103011 or 0538103014.

CAUTION! High surface temperature during filling of the bladder-type accumulator with gas!

Risk of burning!

- ▶ Only touch the surfaces of the bladder-type accumulator with heat-resistant protective clothing, e.g. gloves, or do not work at hot surfaces.
- ▶ Allow the bladder-type accumulator to cool down sufficiently before touching it.
- ▶ Observe the protective measures of the system manufacturer.

NOTICE! Bursting bladder when filling quickly with gas!

Damage to property!

- ▶ Only fill the bladder-type accumulator using a pressure regulator.
- ▶ Fill the accumulator slowly.

- ▶ Connect the nitrogen bottle with pressure regulator to the gas valve of the bladder-type accumulator, using the hose of the charging and test device.
- ▶ The prescribed gas filling pressure P₀ is indicated in the hydraulic circuit diagram.
- ▶ Slowly open the shut-off cock of the gas bottle to make sure that the bladder evenly touches the interior wall.
- ▶ Leave the shut-off cock open until the specified gas filling pressure P₀ is displayed at the pressure gauge of the charging and test device.
- ▶ Always keep an eye on the pressure gauge during the charging process.
- ▶ Close the shut-off cock of the gas bottle.
- ▶ The gas filling pressure is temperature-dependent. During charging, the bladder-type accumulator heats up. Wait until the bladder-type accumulator has cooled down.
- ▶ Check the gas filling pressure P₀ and correct it if necessary.
- ▶ Remove the charging and test valve of the charging and test device.

- ▶ Screw the sealing cap and the cover cap back on the gas valve of the bladder-type accumulator.
- ▶ Note the set gas filling pressure P0 on the warning sign, see Fig. 9, and/or the name plate in the field provided, see Fig. 3.

The gas filling pressure is now checked and set.

**Commissioning
the bladder-type
accumulator**

- ▶ Commission the bladder-type accumulator together with the system according to the operating instructions of the overall system.

8.3 Re-commissioning after standstill

- ▶ Check that the gas filling pressure is equal to the value P0 specified in the hydraulic circuit diagram. Proceed as described in chapter 10.4 "Maintenance".
- ▶ Check the gas valve for leak-tightness.
- ▶ Make sure that the accumulator does not show any signs of corrosion and that the coating is intact.
- ▶ Commission the bladder-type accumulator together with the system according to the operating instructions of the overall system.
- ▶ Check the hydraulic fluid connection for leak-tightness.

9 Operation

WARNING

Uncontrolled loosening of the bladder-type accumulator due to mechanical stress caused by relative motion, or due to dynamic loads caused by vibrations transmitted from the environment!

Danger to life! Risk of injury! Damage to property!

- ▶ Use suitable holding devices to fix the bladder-type accumulator in place, e.g. mounting clamps and an additional console, if required.
- ▶ Ensure installation without tension stress.
- ▶ Observe the tightening torques specified on the system side.

Cracking of the bladder-type accumulator due to stability reduction caused by extreme ambient temperature!

Danger to life! Damage to property!

- ▶ Ensure that the ambient temperature of the bladder-type accumulator does not exceed or fall below the temperature specified in data sheet 50171, see chapter 1.2 "Required and amending documentation".
- ▶ Maintain the admissible min./max. temperature TS, taking into account the ambient temperature.

Reduction of wall thickness of the pressure container when operated using corrosive hydraulic fluids! Wear of the pressure container and the elastic elements (sealing devices) during operation with abrasive hydraulic fluids!

Danger to life! Danger of bursting! Damage to property!

- ▶ Only use the hydraulic fluids recommended in data sheet 50171, see chapter 1.2 "Required and amending documentation".
- ▶ Check the bladder-type accumulator for abrasive wear regularly.

Bursting of the bladder-type accumulator due to the maximum admissible pressure PS being exceeded!

Danger to life! Risk of injury! Damage to property!

- ▶ Adhere to the maximum admissible pressure PS indicated on the name plate.

Cracking of the bladder-type accumulator due to wall thickness caused by corrosion!

Danger to life! Risk of injury! Damage to property!

- ▶ Check the bladder-type accumulator for external corrosion regularly – depending on the application.
- ▶ Determine the frequency of the corrosion checks according to the application.
- ▶ Check which provisions or ordinances in your country and/or are to be complied with for your application.

CAUTION

Leakage of hydraulic fluid under high pressure due to faulty assembly of the bladder-type accumulator!

Risk of injury! Damage to property!

- ▶ Ensure that the bladder-type accumulator has been mounted by an expert, see chapter 2.4 "Qualification of personnel", completely and without tension stress before commissioning the bladder-type accumulator.
- ▶ Ensure that the tightening torques required by the system have been observed.

NOTICE

Wear or cracks in the bladder due to the gas filling pressure being too low or too high! Sudden gas losses into the system!

Damage to property!

- ▶ Adhere to the gas filling pressure indicated on the hydraulic circuit diagram.

Gas or oil leakage due to loss of preload / elasticity of the sealing devices due to too high/low temperature! Cracking of the bladder due to material embrittlement in too low a temperature!

Damage to property!

- ▶ Ensure that the temperature of the bladder-type accumulator does not exceed or fall below the temperature specified in data sheet 50171, see chapter 1.2 "Required and amending documentation".
- ▶ Observe the operating temperature and consider the ambient temperature.

During operation of the bladder-type accumulator, observe the following points:

- ▶ Make sure that the name plate is always present and legible. Otherwise, further operation is not allowed.
- ▶ Make sure that no loads/forces, e.g. temperature expansions or vibrations, occur and are transferred to the bladder-type accumulator. The effect of external forces can lead to damage to the hydraulic fluid connection and the uncontrolled release of pressurized hydraulic fluid.
- ▶ Ensure that the bladder-type accumulator, type HAB...-6X/ is only operated within the performance limits specified in data sheet 50171, see chapter 1.2 "Required and amending documentation", in particular within the admissible minimum/maximum temperature TS and the maximum permissible pressure PS according to the name plate.
- ▶ Make sure that the bladder-type accumulator is only operated in a flawless condition.
- ▶ In case of emergency, an error case, or any other irregularity, switch off the system and secure it against restarting.



Changes in operating speeds, temperatures, increasing noises or power consumption are an indication of wear or damage to the bladder-type accumulator/the system. To ensure high operational safety and availability of the system, Bosch Rexroth recommends permanently monitoring these values.

10 Maintenance and repair



WARNING

Cracking of the bladder-type accumulator due to wall thickness caused by corrosion!

Danger to life! Risk of injury! Damage to property!

- ▶ Check the bladder-type accumulator for external corrosion regularly – depending on the application.
- ▶ Determine the frequency of the corrosion checks according to the application.
- ▶ Check which provisions or ordinances in your country and/or are to be complied with for your application.

Maintenance

- ▶ Perform the prescribed maintenance work at the intervals specified in the operating instructions of the overall system.



If no other instructions are available, Bosch Rexroth recommends maintenance intervals according to chapter 10.4 "Maintenance".

Only experts may perform maintenance and repair work at the bladder-type accumulator, see chapter 2.4 "Qualification of personnel".

Close openings

- ▶ Before transport, close all openings using the supplied protective caps/cover caps in order to prevent dirt or humidity from penetrating the bladder-type accumulator.

10.1 Cleaning and care

- ▶ Close the oil valve if it is not connected to the hydraulic fluid connection, and cover the gas port with the cover caps provided.
- ▶ Do not use solvents or aggressive cleaning agents.
- ▶ Only clean the bladder-type accumulator with residue-free industrial wipes.
- ▶ Do not use a high-pressure washer for cleaning.

10.2 Inspection

- ▶ Check the hydraulic lines, line connections and seals for leak-tightness and check the bladder-type accumulator for external corrosion.
- ▶ To do so, follow the system manufacturer's instructions.

10.3 Maintenance schedule

For the safe operation and long life cycle of the bladder-type accumulator, a maintenance schedule is to be drawn up for the unit, machine or system. The maintenance schedule must guarantee that the operating conditions of the bladder-type accumulator stay within the prescribed limits during the entire period of use.

In particular, compliance with the following operating parameters must be ensured:

- Maximum admissible pressure PS
- Admissible min./max. temperature TS
- Gas filling pressure PO

Changes made to these parameters increase the wear of the bladder-type accumulator. The cause must be identified and remedied immediately.

In order to achieve high operational safety of the bladder-type accumulator in the machine/system, Bosch Rexroth recommends checking the parameters mentioned above permanently and automatically, and an automatic shut-off of the system in case of changes which exceed the usual fluctuations in the intended operating range.



Further information on maintenance is provided in the operating instructions of the overall system.

10.4 Maintenance

10.4.1 Required tests/maintenance activities

After having been charged with gas, Rexroth bladder-type accumulators are virtually maintenance-free. In order to guarantee a fault-free operation and a long life cycle, however, the following tasks are to be carried out:

- Checking the gas filling pressure
- Inspection of the safety equipment, fittings
- Inspection of the line connections
- Inspection of accumulator fixation



During maintenance work for which the accumulator has to be removed (e.g. replacement of bladder), the bladder-type accumulator/system has to be depressurized.

For disassembly, assembly and commissioning, proceed as described in the corresponding chapters.

Checking the gas filling pressure

To check the gas filling pressure of the bladder-type accumulator, proceed as follows:

- ▶ Make sure that the system is depressurized.
- ▶ Refer to the bladder-type accumulator name plate for the intended gas filling pressure P0.

WARNING! Uncontrolled release of a significant amount of gas!
Danger to life! Risk of suffocation!

- ▶ Make sure that the workplace is sufficiently ventilated.
- ▶ Always use the charging and test device for bladder-type accumulator (HAB), material number: 0538103011 or for bladder-type and diaphragm accumulators (HAB/HAD), material number, to test the gas filling pressure: 0538103014.
- ▶ Remove the cover cap and the sealing cap from the gas side of the bladder-type accumulator.
- ▶ Screw the charging and test valve of the charging and test device onto the bladder-type accumulator gas valve.



Additionally, please observe the operating instructions 50144-B of the charging and test device, material number: 0538103011 or 0538103014, see chapter 1.2 "Required and amending documentation".

- ▶ Check whether the gas filling pressure displayed on the pressure gauge of the charging and test device matches the P0 value entered on the name plate. If the two values differ, set the gas filling pressure as described in chapter 8.2 "Re-commissioning after standstill".
- ▶ Remove the charging and test valve of the charging and test device from the bladder-type accumulator gas valve.
- ▶ Screw the sealing cap and the cover cap back on the bladder-type accumulator.

The gas filling pressure is now checked and set.

10.4.2 Test intervals of the bladder-type accumulator**Table 8: Test intervals of the bladder-type accumulator**

Test	Interval	Maintenance activity
Checking of the gas filling pressure with external visual inspection	Test 1: Within one week as of commissioning	<ul style="list-style-type: none"> ▶ Check the gas filling pressure. ▶ Check the oil valve for leak-tightness. ▶ Perform a visual inspection for external corrosion.
	Test 2: Within 3 months after commissioning, if no gas losses during test 1	
	Test 3: Annual test, if no gas losses during test 2	
Internal visual inspection	Every 10 years	<ul style="list-style-type: none"> ▶ Check the pressure container according to national provisions. ▶ Carry out a visual inspection of the pressure container for internal corrosion.

10.5 Replacing wear parts

- ▶ Only use spare parts approved by the manufacturer to replace wear parts.

10.6 Repair

Only experts may perform repair works at the bladder-type accumulator type HAB...-6X/, see chapter 2.4 "Qualification of personnel".

If you have any questions regarding spare parts and repair, please contact your local Bosch Rexroth service or the service department of the bladder-type accumulator manufacturer's factory 16.1 "List of addresses".

11 Disassembly and replacement



WARNING

Parts flying off due to residual pressure still present after draining!

Danger to life! Risk of injury!

- ▶ Check the residual pressure in the bladder-type accumulator using the charging and test device.

11.1 Required tools

For the disassembly of the bladder-type accumulator you will need:

- Charging and test device for bladder-type accumulators (HAB), material number: 0538103011 or for bladder and diaphragm accumulators (HAB/HAD), material number: 0538103014, according to data sheet 50171/operating instructions 50144-B, see chapter 1.2 "Required and amending documentation".
- Open-end wrench
- Lifting gear



For further details on wrench sizes, refer to chapter 7 "Assembly", Table 7.

11.2 Preparing for disassembly

- Overall system**
- ▶ Decommission the overall system as described in the operating instructions of the system.

Afterwards, prepare the disassembly of the bladder-type accumulator as follows:

- ▶ Depressurize the hydraulic system.
- ▶ Make sure that the relevant system parts are depressurized and de-energized.

- Bladder-type accumulator**
- ▶ Discharge the bladder-type accumulator via the discharge device of the system.
 - ▶ Please note that the gas filling pressure still exists on the gas side after hydraulic unloading.

11.3 Disassembly process

To disassemble the bladder-type accumulator, proceed as follows:

- ▶ Ensure that the hydraulic system is depressurized and the bladder-type accumulator is hydraulically unloaded.
- ▶ Remove the sealing cap and the cover cap from the gas side of the bladder-type accumulator.
- ▶ Screw the charging and test valve of the charging and test device onto the bladder-type accumulator gas valve.

WARNING! Increased nitrogen concentration in the environment when draining the gas filling pressure of many large bladder-type accumulators!

Danger to life! Risk of suffocation!

- ▶ Make sure that the workplace is sufficiently ventilated.

WARNING! Loud hissing when gas is drained!

Danger of hearing damage!

- ▶ Drain the gas slowly.

CAUTION! Low surface temperature when draining the gas!

Danger of frostbite!

- ▶ Only touch the surfaces of the bladder-type accumulator with cold-resistant protective clothing, e.g. gloves, or do not work at cold surfaces.
- ▶ Allow the bladder-type accumulator to warm up sufficiently before touching it.
- ▶ Observe the protective measures of the system manufacturer.

- ▶ Relieve the gas filling pressure in the bladder.



Additionally, please observe the operating instructions 50144-B of the charging and test device, material number: 0538103011 or 0538103014.

- ▶ The gas filling pressure is temperature-dependent. During draining, the bladder-type accumulator cools down. Wait until the bladder-type accumulator has heated up to ambient temperature again.
- ▶ Relieve the gas filling pressure generated in the bladder during heating up.



Additionally, please observe the operating instructions 50144-B of the charging and test device, material number: 0538103011 or 0538103014.

- ▶ Remove the charging and test valve of the filling and test device from the gas valve of the bladder-type accumulator.

WARNING! Uncontrolled loosening of the gas valve/gas valve assembly/
bladder-type accumulator due to residual pressure!

Danger to life! Risk of injury!

- ▶ Loosen the gas valve insert, see Fig. 11, item 1, slowly using an open-end wrench SW 17, until the residual pressure is audibly released via the relieving nut, see Fig. 11, item 2, in the thread of the gas valve insert.

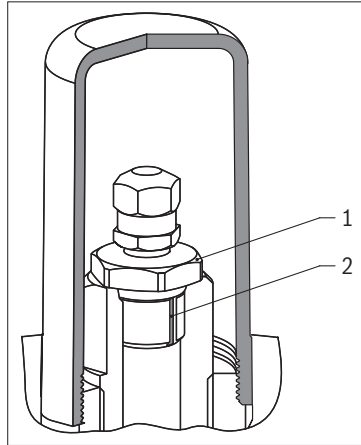


Fig. 11: Relieving nut

1 Gas valve insert

2 Relieving nut

- ▶ Completely release the residual pressure.
- ▶ Manually unscrew the gas valve insert.
- ▶ Remove the gas valve insert, to keep the bladder-type accumulator depressurized for an extended period.
- ▶ Screw the sealing cap and the cover cap back on the gas side of the bladder-type accumulator.
- ▶ Attach the bladder-type accumulator to the lifting device.

WARNING! Falling of the bladder-type accumulator during disassembly!

Danger to life! Risk of injury! Damage to property!

- ▶ Use lifting gear with sufficient lifting capacity to lift bladder-type accumulators with a weight > 15 kg.
- ▶ Use lifting straps or lifting slings as attachment devices.

CAUTION! Residual oil escapes when the hydraulic fluid connection is removed!

Slip hazard! Health hazard! Environmental pollution!

- ▶ Remove leaking residual oil immediately.
- ▶ Wear protective gloves and safety goggles.
- ▶ If nevertheless hydraulic fluid comes into contact with the eyes or penetrates the skin, please consult a doctor immediately.
- ▶ Disconnect the bladder-type accumulator from the system.
- ▶ Attach the protective cap to the hydraulic fluid connection.
- ▶ Loosen the holding devices of the bladder-type accumulator.

The bladder-type accumulator is now dismantled.

WARNING! Uncontrolled rolling away, overturning or falling of the bladder-type accumulator!

Risk of injury! Damage to property!

- ▶ Make sure that the bladder-type accumulator is positioned safely and secured against unintended rolling away, overturning or falling.
- ▶ Set down the bladder-type accumulator safely using the lifting device and secure it against unintended rolling away or falling.

12 Disposal

WARNING

Bursting of the container due to excessive thermal pressure in a bladder-type accumulator which is preloaded with gas!

Risk of injury! Risk of fire!

- ▶ Before disposal, ensure that the gas filling pressure in the bladder has been released.

- ▶ Permanently mark a bladder-type accumulator which should no longer be used, to prevent reuse as a pressure container.



The gas filling pressure in the bladder-type accumulator may increase due to heating.

- ▶ This means you should check the bladder-type accumulator for residual pressure once more before detaching the oil valve.
- ▶ If necessary, release the gas filling pressure again before dismantling.

For the disposal of the bladder-type accumulator, comply with the following instructions:

- ▶ Completely drain the bladder-type accumulator.
- ▶ Disassemble the bladder-type accumulator into its individual components in order to recycle them.
- ▶ Dispose of the bladder and the steel parts separately.

12.1 Environmental protection

Careless disposal of the bladder-type accumulator, the contained hydraulic fluid and the packaging material can pollute the environment.

- ▶ Dispose of the bladder-type accumulator and the packaging material in accordance with the applicable national regulations in your country.
- ▶ Dispose of the hydraulic fluid in accordance with the currently applicable national regulations in your country. Also observe the valid safety data sheet of the hydraulic fluid.

13 Extension and modification



WARNING

Bursting of the container or oil leakage due to structural changes, mechanical processing or welding at pressurized parts!

Danger to life! Risk of injury! Damage to property!

- ▶ Install the bladder-type accumulator without structural changes into the machine/system.

You will be considered responsible for any extensions or modifications to the product.

Any declarations shall become invalid

If you undertake any extensions or modifications to the product marketed by Bosch Rexroth, this means you are changing the condition as supplied.

Any statements made by Bosch Rexroth regarding this product will then lose their validity.



The Bosch Rexroth warranty applies only to the configuration supplied. Following an extension or a modification, the claim to warranty expires.

14 Troubleshooting



Table 8 may assist you when troubleshooting. This table is not exhaustive. In practice, there may be problems that are not included here.

14.1 How to proceed when troubleshooting

- ▶ Always work systematically and purposefully, even when under time pressure. Random, thoughtless disassembly and changing of settings might result in inability to determine the original cause of error.
- ▶ First get an overview of the function of the bladder-type accumulator in conjunction with the overall system.
- ▶ Try to establish whether the bladder-type accumulator functioned properly in conjunction with the overall system before the error first occurred.
- ▶ Try to determine any changes of the overall system in which the bladder-type accumulator is integrated.
 - Were there any changes to the application conditions or area of application of the bladder-type accumulator?
 - Has any maintenance work been performed recently? Is there an inspection or maintenance record?
 - Have modifications (e.g. refittings) or repair works been performed at the overall system (machine/system, electrical system, control) or at the bladder-type accumulator? If yes: What were they?
 - Was the hydraulic fluid changed?
 - Was the bladder-type accumulator or machine used as intended?
 - How did the fault become apparent?
- ▶ Try to get a clear idea of the cause of error. If necessary, ask the actual (machine) operator.
- ▶ Document all work done.
- ▶ If the error cannot be remedied, please contact one of the contact addresses provided in chapter 16.1 "List of addresses".

14.2 Fault table

Table 9: Fault table of bladder-type accumulator type HAB...-6X/

Fault	Possible cause	Remedy
Initial gas tension changes during operation	Leakage/gas valve leaks	<ul style="list-style-type: none"> ▶ Perform a visual inspection. ▶ Perform a leak test with leak spray during final assembly.
	Gas valve broken/damaged	<ul style="list-style-type: none"> ▶ Have the gas valve with sealing cap replaced by an expert. ▶ Always use the charging and test device for filling with gas and draining, material number: 0538103011 or 0538103014, according to data sheet 50171 / operating instructions 50144-B (see chapter 1.2 "Required and amending documentation")
	Gas valve functionality impaired due to contamination	<ul style="list-style-type: none"> ▶ Have the gas valve with sealing cap replaced by an expert.
	System-related change of pressure dependent on the temperature	<p>Temperature-dependent changes to the gas filling pressure cannot be avoided.</p> <ul style="list-style-type: none"> ▶ The gas filling pressure must therefore be chosen in accordance with the expected operating temperatures.
Cracks on the container	Reduction due to permeation	<ul style="list-style-type: none"> ▶ Refill gas.
	Application out of specification	<ul style="list-style-type: none"> ▶ Stop the system immediately. ▶ Exchange the bladder-type accumulator. The bladder-type accumulator must not be put into operation again, but must be disposed of, see chapter 12 "Disposal".
	Operation outside the prescribed temperature range	<ul style="list-style-type: none"> ▶ Stop the system immediately. ▶ Exchange the bladder-type accumulator. The bladder-type accumulator must not be put into operation again, but must be disposed of, see chapter 12 "Disposal". ▶ After commissioning, check the operating temperature.
Internal corrosion	Use of inappropriate hydraulic fluid	<ul style="list-style-type: none"> ▶ Stop the system immediately. ▶ Exchange the bladder-type accumulator. The bladder-type accumulator must not be put into operation again, but must be disposed of, see chapter 12 "Disposal". ▶ Use suitable hydraulic fluid.
	Residual humidity in the container due to inappropriate storage conditions	<ul style="list-style-type: none"> ▶ Stop the system immediately. ▶ Exchange the bladder-type accumulator. The bladder-type accumulator must not be put into operation again, but must be disposed of, see chapter 12 "Disposal". ▶ Observe the prescribed storage conditions.
Abrasion and reduction of the wall thickness.	Use of inappropriate hydraulic fluid	<ul style="list-style-type: none"> ▶ Stop the system immediately. ▶ Exchange the bladder-type accumulator. The bladder-type accumulator must not be put into operation again, but must be disposed of, see chapter 12 "Disposal". ▶ Use suitable hydraulic fluid. ▶ Ensure cleanliness.

Table 9: Fault table of bladder-type accumulator type HAB...-6X/

Fault	Possible cause	Remedy
Oil losses at interfaces to the outside	Incorrect order of assembly in service case	▶ Have the service performed by an expert only.
	O-ring of the sealing is damaged and/or hardened due to excessive oil temperature	▶ Have the gas valve replaced by an expert. ▶ Check the oil temperature.
	Oil valve broken due to assembly of the bladder-type accumulator with tension stress.	▶ Exchange the oil valve.
	Inadmissible environmental force effect	▶ Obtain approval from Bosch Rexroth.
	Damage to the oil valve during transport	▶ Perform a visual inspection after transport.
	Inadmissible force effects by mobile applications	▶ Obtain approval from Bosch Rexroth.
Impossible to assemble	Wrong thread	▶ Replace the affected parts.
	Thread damaged	▶ Replace the affected parts.

15 Technical data



The admissible technical data of the bladder-type accumulator can be found in data sheet 50171, see chapter 1.2 "Required and amending documentation".

For further information on the product, visit www.boschrexroth.com/hab.

16 Appendix

16.1 List of addresses

Contacts for service and spare parts:

Bosch Rexroth AG
Industrial Hydraulics Service
Bürgermeister-Dr.-Nebel-Straße 8
97816 Lohr am Main
Germany

Phone: +49 (0) 9352/40 50 60

Email: service@boschrexroth.com

For service representatives in your area outside of Germany, please refer to www.boschrexroth.com.

Headquarters:

Bosch Rexroth AG
Zum Eisengießer 1
97816 Lohr am Main
Germany

Phone: +49 (0) 9352/18 0

For questions about the product:

Bosch Rexroth AG
Online Customer Support

Phone: +49 (0) 9352/40 30 20

Email: my.support@boschrexroth.com

For the addresses of our sales and service network and sales organizations, visit www.boschrexroth.com/adressen.

17 Alphabetical index

A		I	
Abbreviations	9	Inspection	41
Admissible min./max. temperature TS	9, 10, 21	Installation conditions	28
Assembly	28	Intended use	10
Assembly of the bladder-type accumulator	30	L	
B		List of addresses	53
Bladder	19	M	
C		Maintenance	42
Cleaning and care	41	Maintenance and repair	41
Commissioning	35	Maintenance schedule	42
– after standstill	38	Maximum admissible pressure PS	9, 10, 21
– first	36	Mounting on a console	32
– preparation	36	Mounting with clamp(s)	30
Cover cap of gas valve	19	N	
D		Name plate	19, 20
Damage to property	16	O	
Designations	9	Obligations of the machine end-user	15
Disassembly – preparation	45	Oil valve	19
– process	46	Operation	39
Disassembly and replacement	45	O-ring on accumulator adapter ...	19
Disposal	48	P	
E		Personal protective equipment ...	15
Environmental protection	48	Pressure container	19
Extension and modification	49	Product description	19
F		Product identification	20
Fault table	51	Protective cap of oil valve	19
G		Q	
Gas filling pressure P0	9, 10, 21	Qualification	11
Gas valve	19	R	
Gas valve support	19	Re-commissioning after standstill ...	38
H		Relieving nut	47
Holding nut	19	Replacing wear parts	44
		Required documentation	7
		Required tests/maintenance activities	42
		Required tools	29, 45

S

Safety instructions	10
- general	12
- product-dependent	13
- signal word	8
Scope of delivery	18
Sealing surface on the hydraulic fluid connection	19
Setting the gas filling pressure	36
Shipping the bladder-type accumulator	26
Storage	22
Storage of the bladder-type accumulator	26
Symbols	9

T

Technical data	52
Test intervals	43
Transport	22
- by hand	23
- using a forklift	24
- with lifting gear	24
Transport of the bladder-type accumulator	22
Troubleshooting	50

U

Unpacking	28
-----------------	----

W

Warning sign	34
Weights	23

Bosch Rexroth AG

Industrial Hydraulics

Zum Eisengießer 1

97816 Lohr a. Main

Germany

Tel. +49 (0) 9352/40 30 20

my.support@boschrexroth.com

www.boschrexroth.com