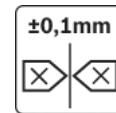



## PE 2 Positioning Unit



- For positioning a workpiece pallet in a manual/automatic processing station

 [Assembly instructions](#)

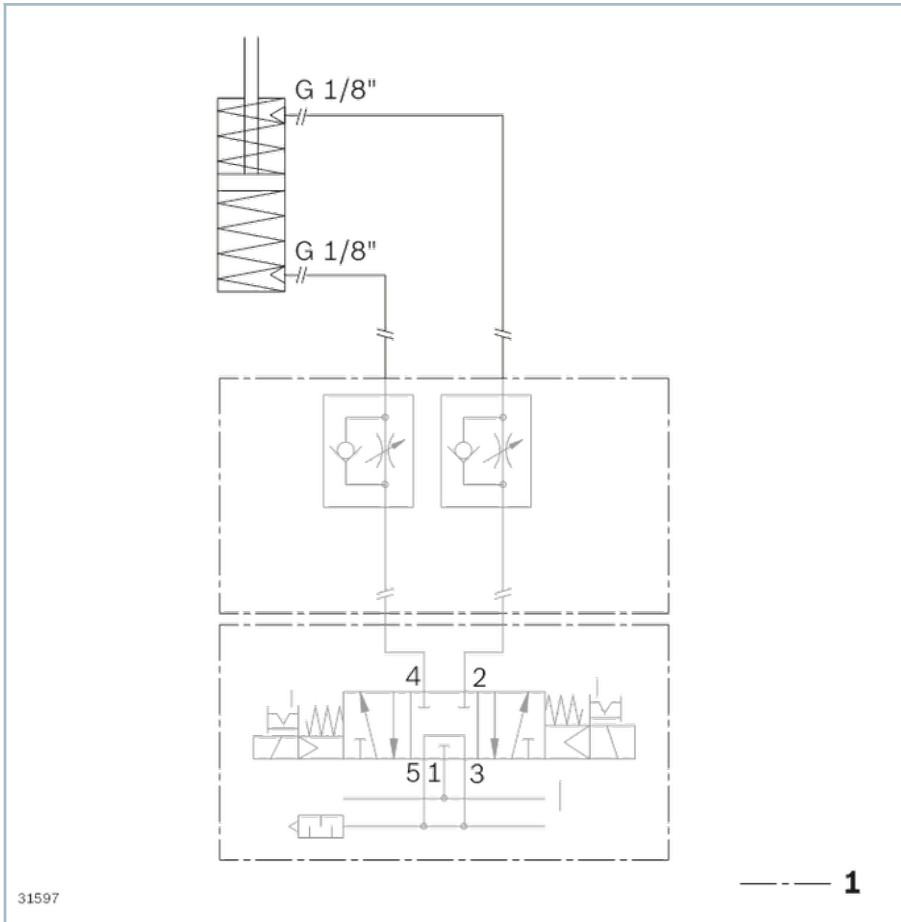
- Can be combined with all WT 2 and WT 2/F workpiece pallets up to 400 x 400 mm

# Technical data

No.	Max. total weight of workpiece pallet	ESD	Reproducing accuracy	Permissible vertical process force	Required compressed air connection	Pneumatic push-in fitting	WT lift above conveying level
	m <sub>G</sub>			F	p	Ø	
	kg		mm	N	bar	mm	mm
3842504706	30	yes	±0,1	300	4 ... 6 bar	G1/8"	2,5
3842563400	30	yes	±0,1	300	4 ... 6 bar	G1/8"	2,5
3842504707	30	yes	±0,1	300	4 ... 6 bar	G1/8"	2,5
3842563401	30	yes	±0,1	300	4 ... 6 bar	G1/8"	2,5
3842504708	30	yes	±0,1	300	4 ... 6 bar	G1/8"	2,5
3842563402	30	yes	±0,1	300	4 ... 6 bar	G1/8"	2,5
3842504710	30	yes	±0,1	300	4 ... 6 bar	G1/8"	2,5
3842563403	30	yes	±0,1	300	4 ... 6 bar	G1/8"	2,5
3842504711	30	yes	±0,1	300	4 ... 6 bar	G1/8"	2,5
3842563404	30	yes	±0,1	300	4 ... 6 bar	G1/8"	2,5
3842504712	30	yes	±0,1	300	4 ... 6 bar	G1/8"	2,5
3842563405	30	yes	±0,1	300	4 ... 6 bar	G1/8"	2,5
3842504713	30	yes	±0,1	300	4 ... 6 bar	G1/8"	2,5
3842563406	30	yes	±0,1	300	4 ... 6 bar	G1/8"	2,5
3842504714	30	yes	±0,1	300	4 ... 6 bar	G1/8"	2,5
3842504715	30	yes	±0,1	300	4 ... 6 bar	G1/8"	2,5
3842504716	30	yes	±0,1	300	4 ... 6 bar	G1/8"	2,5
3842504717	30	yes	±0,1	300	4 ... 6 bar	G1/8"	2,5
3842504718	30	yes	±0,1	300	4 ... 6 bar	G1/8"	2,5
3842504719	30	yes	±0,1	300	4 ... 6 bar	G1/8"	2,5

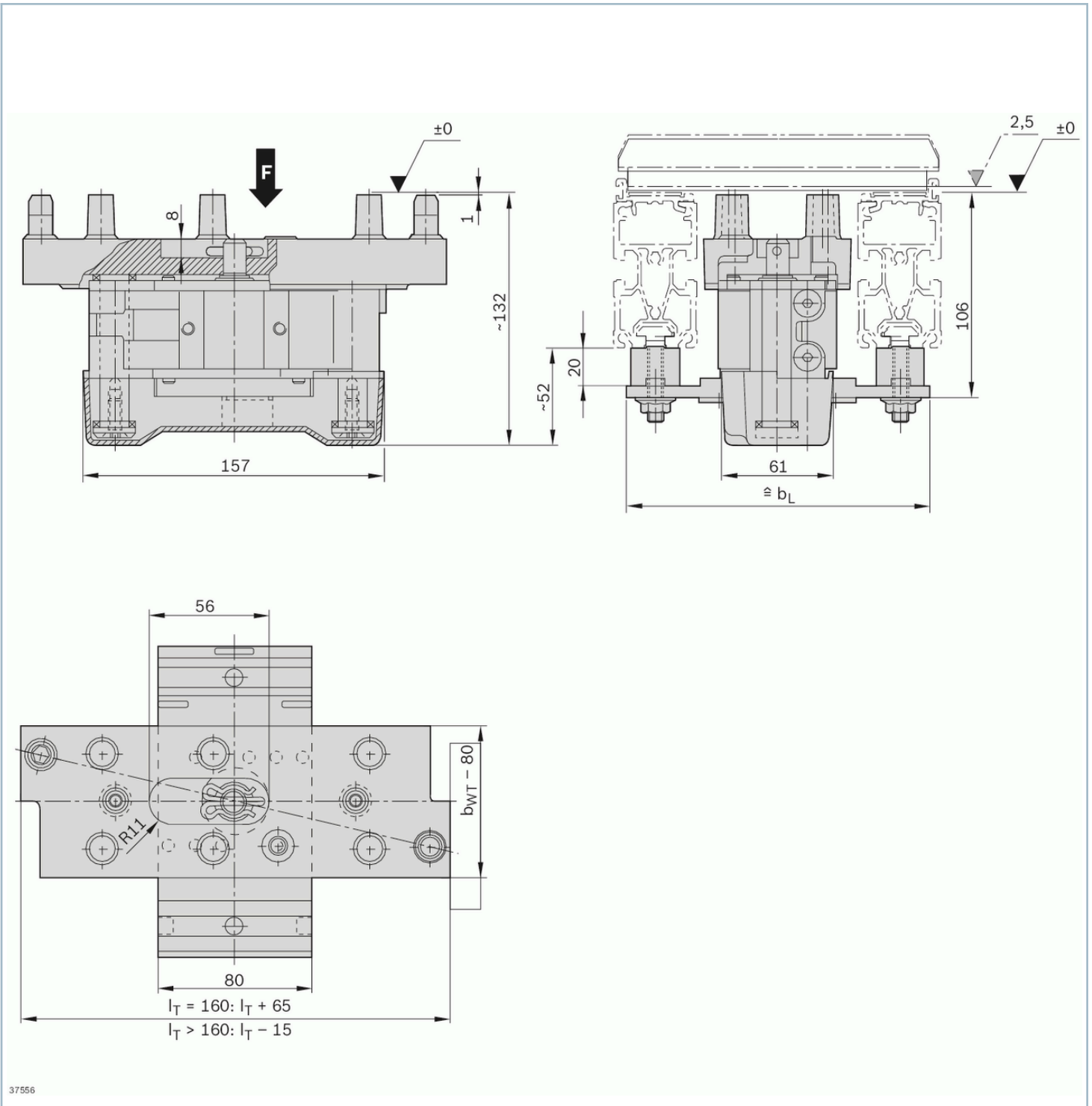
## Compressed air consumption of TS 2plus units

# Symbols/Circuit diagrams



1) Not included in the scope of delivery

## Dimensions



## Accessories

### Required accessories

Stop gate VE 2/...

**Recommended accessories**

Position sensing kit for PE 2

**Delivery notes****Scope of delivery**

Incl. fastening material

**Condition of Delivery**

Fully assembled

**Ordering codes**

	No.
PE 2 positioning unit, 160 x 160	3842504706
	3842563400
PE 2 positioning unit, 160 x 240	3842504707
	3842563401
PE 2 positioning unit, 160 x 320	3842504708
	3842563402
PE 2 positioning unit, 240 x 160	3842504710
	3842563403
PE 2 positioning unit, 240 x 240	3842504711
	3842563404
PE 2 positioning unit, 240 x 320	3842504712
	3842563405
PE 2 positioning unit, 240 x 400	3842504713
	3842563406
PE 2 positioning unit, 320 x 160	3842504714
PE 2 positioning unit, 320 x 240	3842504715
PE 2 positioning unit, 320 x 320	3842504716
PE 2 positioning unit, 320 x 400	3842504717
PE 2 positioning unit, 400 x 320	3842504718
PE 2 positioning unit, 400 x 400	3842504719